

# Property Alert!

Innovative Solutions for the Retail Industry



For more information,  
please contact:

Spence J. Mehl  
T: 212.300.5375  
M: 718.781.9064  
E: smehl@rcsrealestate.com

Seth Geldzahler  
T: 732.491.2170  
M: 201.404.5418  
E: seth.geldzahler@am.jll.com

Mac Hewett  
T: 909.467.6902  
M: 908.432.8074  
E: mac.hewett@am.jll.com

Mike McCrary  
T: 909.467.6885  
M: 909.286.4692  
E: mike.mccrary@am.jll.com

Or visit  
[www.rcsrealestate.com](http://www.rcsrealestate.com)



## Bankruptcy Sale of Industrial Leases

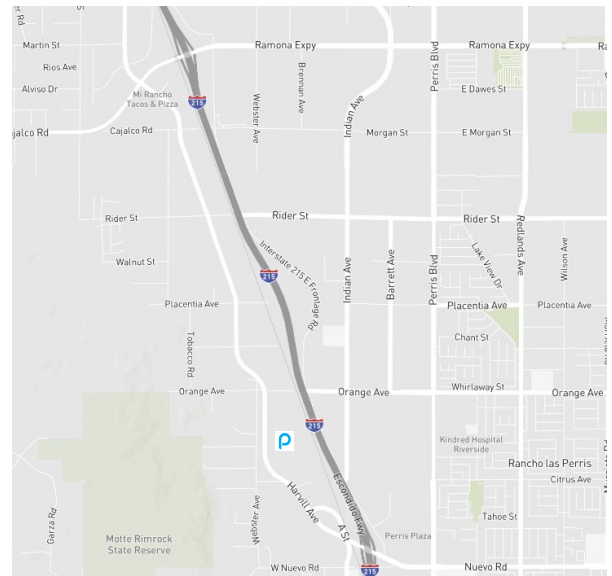
(Subject to Bankruptcy Court approval)

# Immediate availability in the Inland Empire

## Bids Due On or About 10/28/2022



### 21500 Harvill Ave - Perris, CA Harvill Logistics Center



RCS Real Estate Advisors, 470 Seventh Avenue, Eighth Floor, New York, NY 10018, T: 212.239.1100, F: 212.268.5484

Although information has been obtained from sources deemed reliable, neither Owner nor RCS/JLL make any guarantees, warranties or representations, express or implied, as to the completeness or accuracy as to the information contained herein. Any projections, opinions, assumptions or estimates used are for example only. There may be differences between projected and actual results and those differences may be material. The Property may be withdrawn without notice. Neither Owner nor RCS/JLL accepts any liability for any loss or damage suffered by any party resulting from reliance on this information. If the recipient of this information has signed a confidentiality agreement regarding this matter, this information is subject of the terms of that agreement. ©2022 RCS Real Estate Advisors | Jones Lang LaSalle IP, Inc. All rights reserved.

\*\*The outbreak of the COVID-19 virus (novel coronavirus) since the end of January 2020 has resulted in market uncertainty and volatility. While the economic impact of a contagion disease generally arises from the uncertainty and loss of consumer confidence, its impact on real estate values is unknown at this stage.

[Visit our web site](http://www.rcsrealestate.com)

[About Us](#) | [What we offer](#) | [News and events](#) | [Join our mailing list](#) | [Contact us](#)

<http://www.rcsrealestate.com>

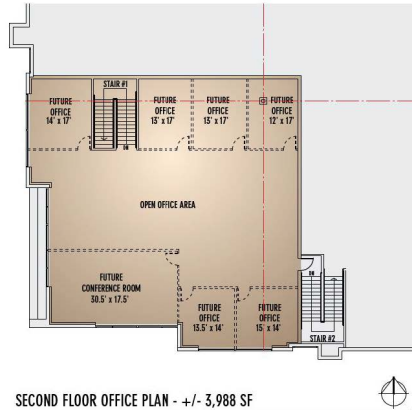
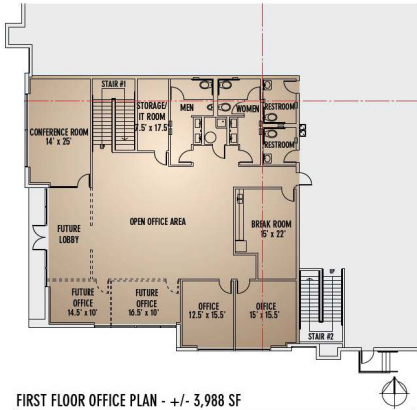


# Property Alert!

Innovative Solutions for the Retail Industry



**21500 Harvill Ave - Perris, CA**  
**Harvill Logistics Center**



## Lease Details

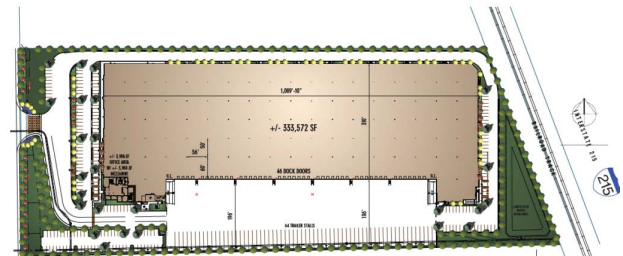
- Square Footage: 333,572
- Base Rent: \$11.40 psf (\$0.95 psf)
- Lease goes thru 2030
- 2x5 Fixed Options
- Immediate Availability

## Turn-key Condition including:

- Full HVAC Warehouse
- Complete Dock Packages
- Comprehensive Forklift Charging & Maintenance Area

## Project Features

- Excellent Access to I-215 Freeway via Harvill Ave. and Cajalco Expy.
- +/- 7,976 SF Class A Two-Story Office
- 36' Clear Height @ First Column
- ESFR Sprinkler System
- 64 Trailer Parking Stalls
- 186'-196' Concrete Truck Yard
- 46 dock high doors
- 2 ground level loading doors



Although information has been obtained from sources deemed reliable, neither Owner nor RCS/JLL make any guarantees, warranties or representations, express or implied, as to the completeness or accuracy as to the information contained herein. Any projections, opinions, assumptions or estimates used are for example only. There may be differences between projected and actual results and those differences may be material. The Property may be withdrawn without notice. Neither Owner nor RCS/JLL accepts any liability for any loss or damage suffered by any party resulting from reliance on this information. If the recipient of this information has signed a confidentiality agreement regarding this matter, this information is subject of the terms of that agreement. ©2022 RCS Real Estate Advisors | Jones Lang LaSalle IP, Inc. All rights reserved.

\*\*The outbreak of the COVID-19 virus (novel coronavirus) since the end of January 2020 has resulted in market uncertainty and volatility. While the economic impact of a contagion disease generally arises from the uncertainty and loss of consumer confidence, its impact on real estate values is unknown at this stage.